

YARIS CLUB UK KNOWLEDGE BASE



TRD Strut Brace Fitment

N.B This is intended as a guide only, if unsure please seek professional assistance. Yaris Club uk accepts no liability, all work is carried out at the owners own risk. This how-to was constructed while working on an echo, as a result there is the possibility of differences in some of the photos

Estimated Time: 1 Hour



-First I removed the pop-screw on each side of the cowel below the windsheild. Just unscrew and pull'm out.



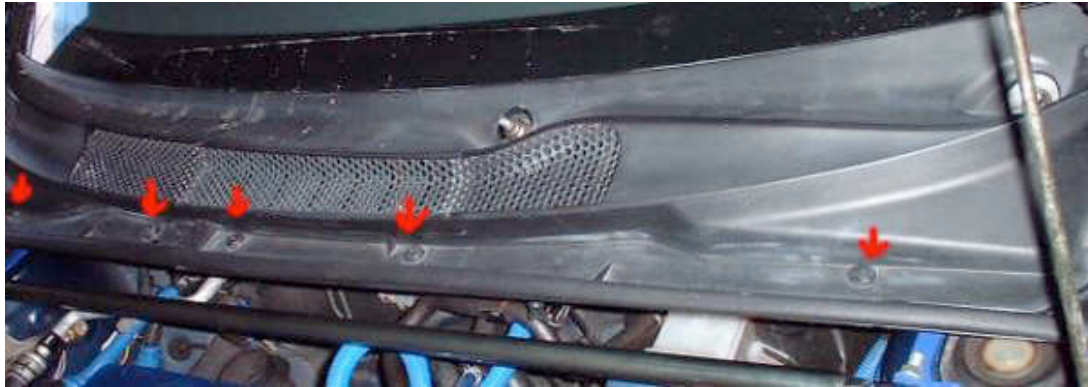
-Then I took the bolt covers off the wiper arms. Pull straight up and off.



- I took the nuts off with a socket wrench and removed the wiper arms.



-Next, I popped the hood and removed the 5 pop-screws holding the bottom of the cowl.



-Just unscrew them and pull'm out. They are a little spread on the end.



-You can pull off the middle portion to reach the 2 middle screws more easily



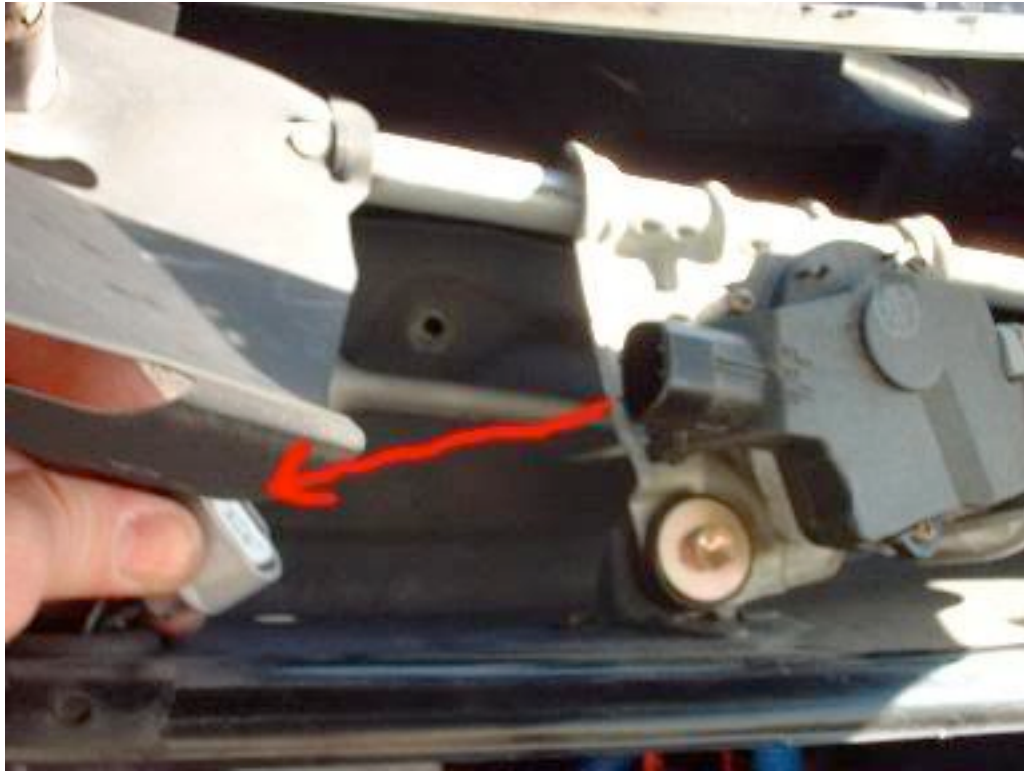
putting the pop-screws back in can be a pain because they are spread. You can stick them in the holes of the cowel to get them back to a pointed shape while you work.



-After all the pop-screws are out you can remove the plastic cowel. There is a piece of weather-stripping that runs along the two halves. You dont have to disconnect it, just take both out and leave it attached.



-With the cowel off I unscrewed the 10mm bolts of the tray and wiper motor assembly
Then I disconnected the wires for the wiper motor.



-I also pulled the grommet for the wiper motor wires out so I could pull the wires and connector out.



-Then I took this hose out of its support bracket.
(The bracket is attached to the bottom of the tray.)
and lifted out the tray with wiper motor assembly in
it.

(wiper motor wire grommet is to the right off the
hose bracket in pic)



-Here is the tray with wiper motor assembly (top),
The wiper arms (middle) and the cowl pieces
(bottom)



-Now with a clear shot of the strut bolts I took the 3
nuts off each side with a 12mm socket.



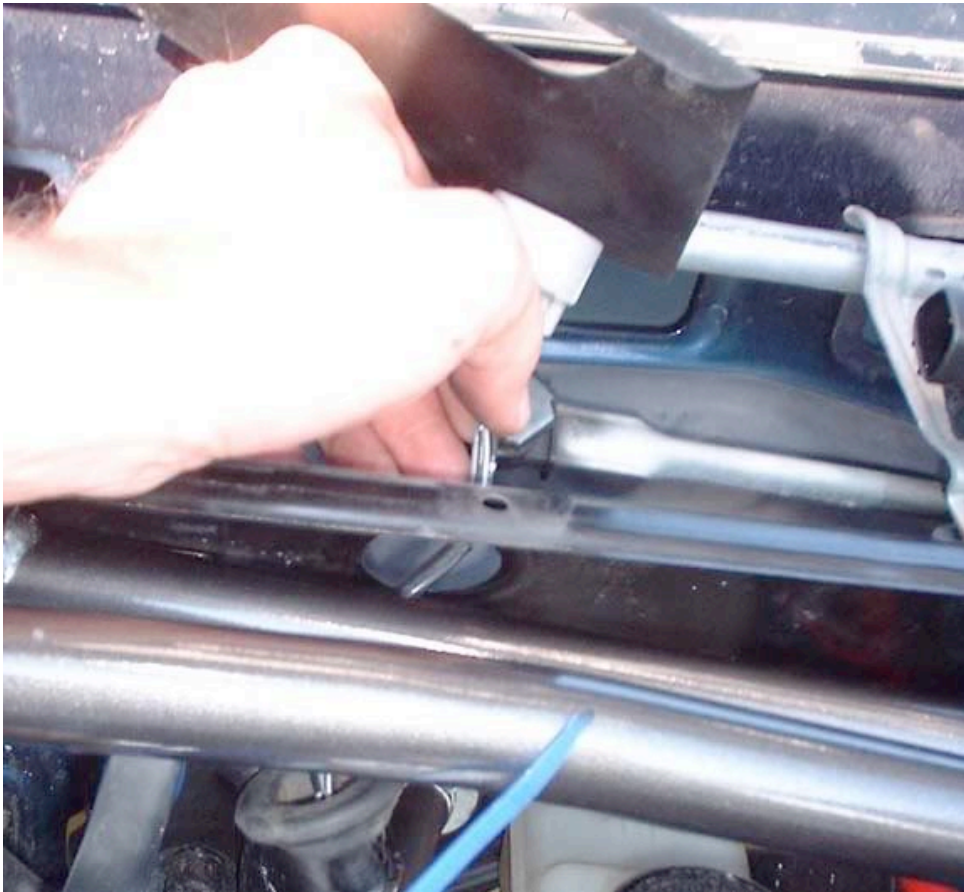
-The Bag of hardware should include 6 of these boomerang shaped shims. They go onto the strut bolts before the bar does.



-Then I placed my bar on and tightened up the nuts.



-Now when you put the tray of the wiper assembly back in you want to make sure you can get the harness back through the hole. The bar can make it difficult to do once it's bolted back down.



-Now, the TRD bar has a mounting point that is on the wiper tray and you will need to drill holes for the bolts. You can do this while the bar is there (like I did) but you may scratch the finish of the bar. OR- you can hold off on tightening the strut bolts once the bar is on and putting the tray in to mark where you need to drill then remove the tray to do your drilling.

-Once your holes are there the brace plate included in the hardware goes in the tray and the bolts go through it.

-This pic is the plate in the tray



-This pic is the front of the mounting point where the bolts go.



-Once everything is tightened up you can reinstall the cowl.



Install takes about an hour or more depending on how you do the drilling.